



# MM2100 Industrial Town

in Global Eco Industrial Park Programme: Final Event



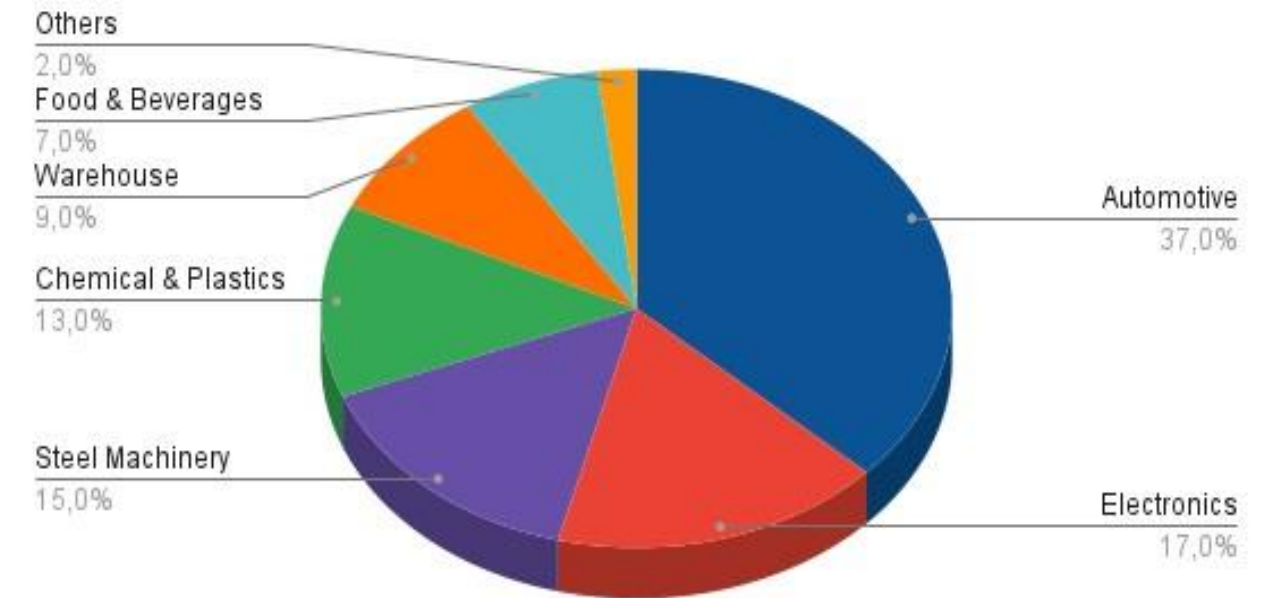
The Best  
Industrial Estate  
MINISTRY of  
INDUSTRY 2015



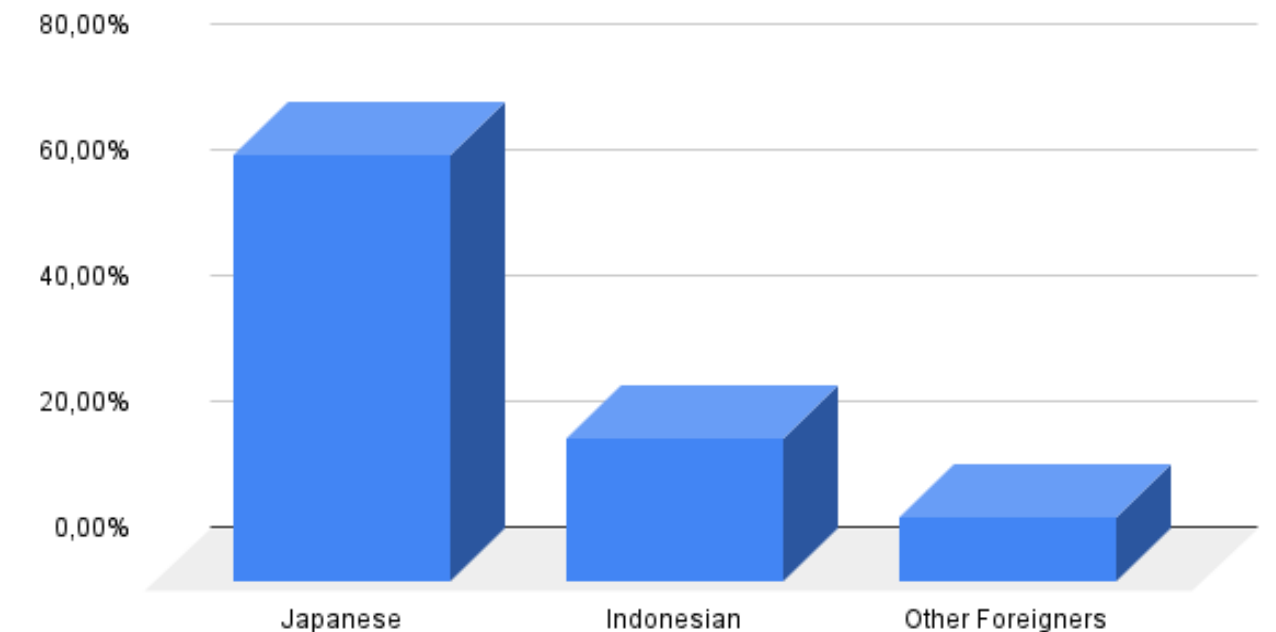
The Best Performance in  
Environmental Management  
MINISTRY OF INDUSTRY  
2015

Developer	PT. Megalopolis Manunggal Industrial Development (MMID)
Shareholders	Marubeni (Japan) : 60% <b>Marubeni</b> Argo Manunggal (Indonesia) : 40% <b>ARGO MANUNGGAL GROUP</b>
Establishment	Sep. 1990
Location	Bekasi, West Java, Indonesia (30km from Jakarta)
Development Area	± 1,500 ha
No. of Companies	± 350 companies
Employment	± 150,000 workers

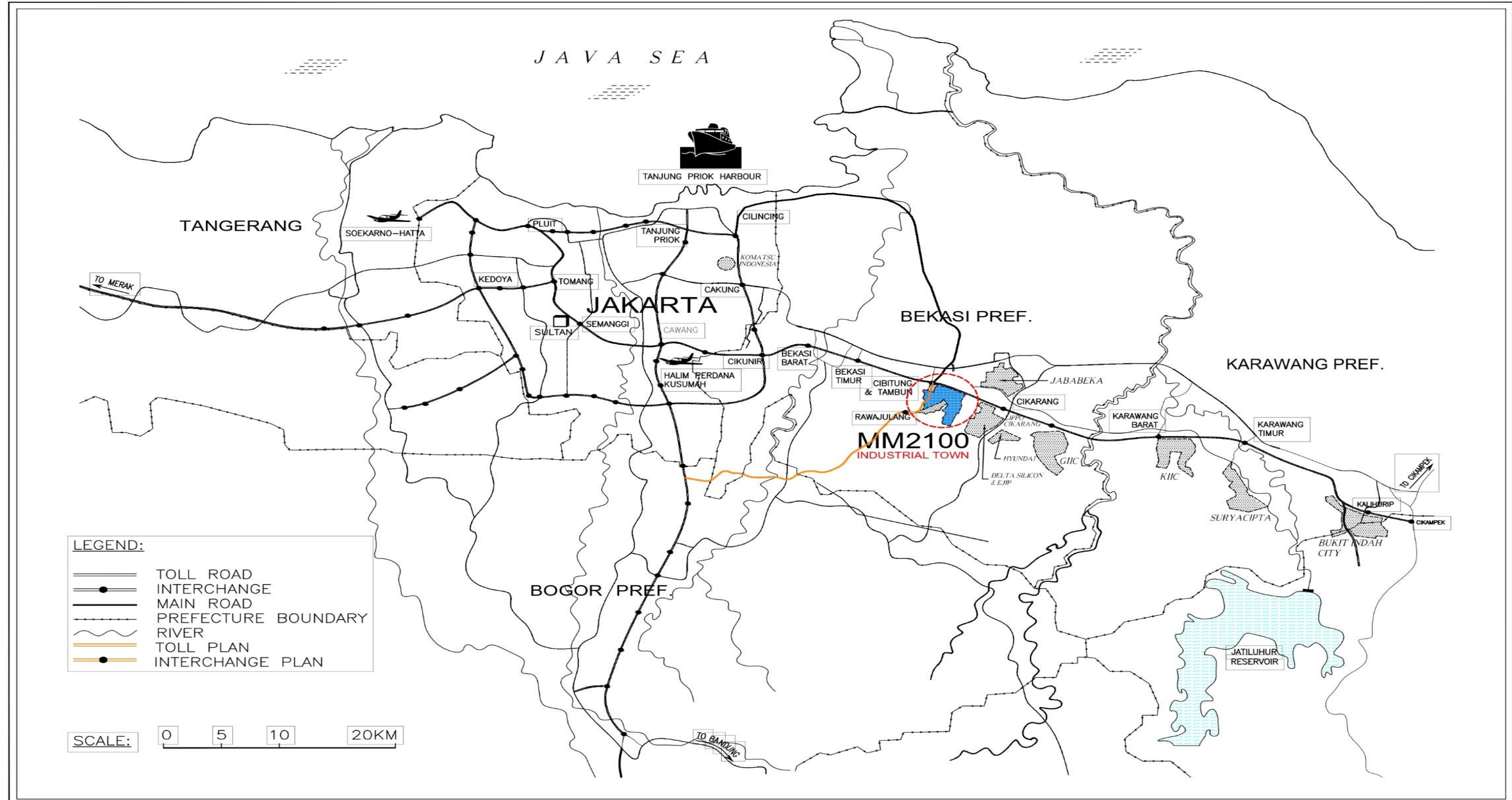
### Industries Type



### Presentase Company Resident



**68% of the tenants are from Japan, 22% from Indonesia, and 10% from other countries.**





# Our Unique Values

- SMK Mitra Industri MM2100 (Vocational High School)
- Digitalization System
- “SiapKerja” JobHub by Indonesia Ministry of Labor
- Renewable System



## SMK Mitra Industri MM2100

- ❑ Supported by 300+ companies in MM2100 area
- ❑ Offering curriculum design that adjustable to meet Industry's requirements.
- ❑ Continuously, up- to- date with the issue of digitalization, environment, and social needs
- ❑ Curriculum is designed to 70% practical and 30% theory.

There are 3 School Specializations:

1. Internship program (to J apan and Germany)
2. University program
3. Occupational program



## SMK Mitra Industri MM2100

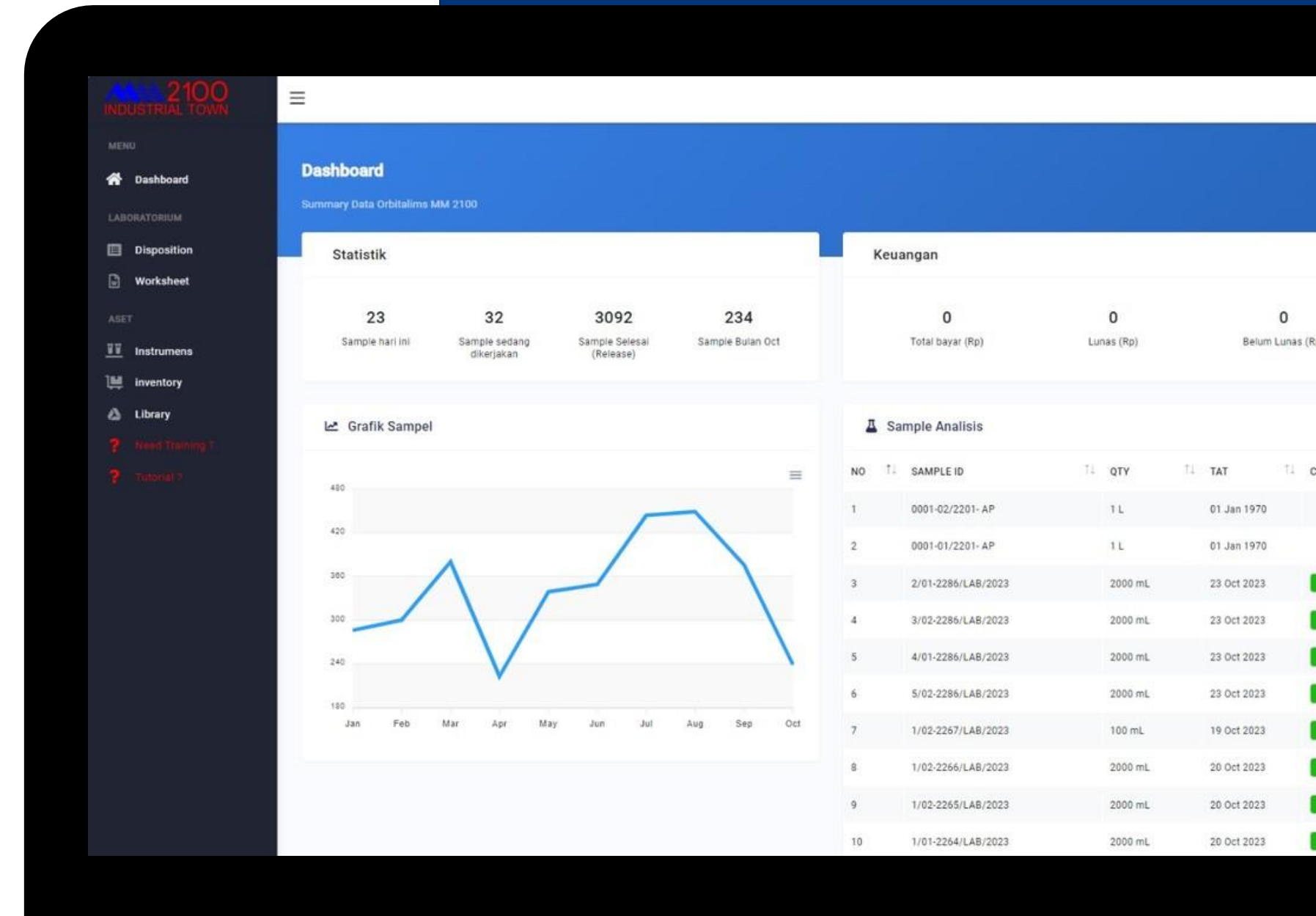
Focused on 8 Programs:

- 1) Motorcycle Business Engineering
- 2) Industrial Electronics
- 3) Mechanical Engineering
- 4) Automotive Light Vehicle Engineering
- 5) Electrical Engineering
- 6) Accounting
- 7) Hospitality
- 8) Chemical Engineering



## Digitalization System

01. Implemented digital invoice to reduce paper use & gasoline consumption
02. Online complain report to reduce paper use
03. Laboratory online system to reduce paper use



LIMS (Laboratory Information Management System)

## “SiapKerja” by Indonesia Ministry of Labor

- 01.** As Government pilot project to provide a JobHub to bridge the jobseeker and jobprovider (MM2100 Tenants)
- 02.** Minimalize the complicated workflow of recruitment by using the “SiapKerja” system
- 03.** “SiapKerja” means “Ready to Work” in English

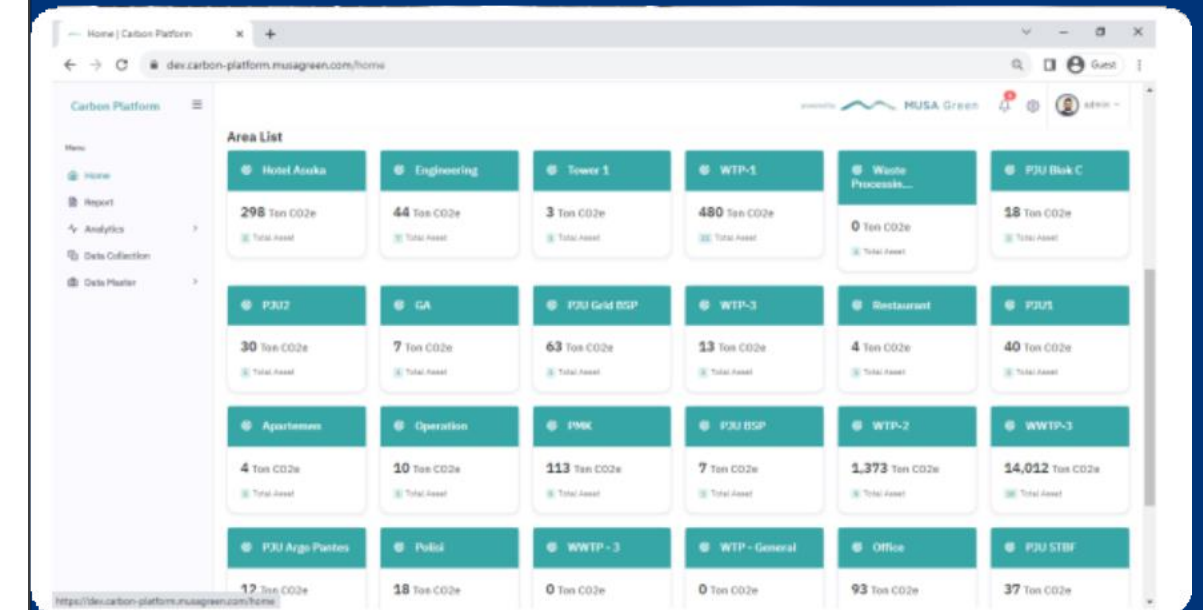




# Renewable Energy

01. Using Carbon Footprint system to monitoring the GHG emission of MM2100 Office. In Q4 of 2023, we're planning to socialize to our Tenants to using this system to better monitoring their GHG emission

02. Installing the Solar Panel, to switch electricity usage to eco-friendly one  
We plan to install the Solar Panel on the roof top of water reservoir for 358 kwp



# Our Plans

## Rain Water Harvesting

**Water Conservation:** By capturing rainwater, we minimize the strain on local water resources, contributing to sustainable water management.

**Cost Savings:** Rainwater is free, and by using it for non-potable purposes, we reduce our utility expenses.

**Environmental Impact:** This initiative lowers our environmental footprint, as it helps manage stormwater and reduces the risk of flooding.

## Effluent Water Reuse (for Inside MM2100 only)

**Resource Efficiency and Cost Savings:** Reusing wastewater and collecting rainwater conserves local water resources, reduces procurement costs, and enhances financial sustainability.

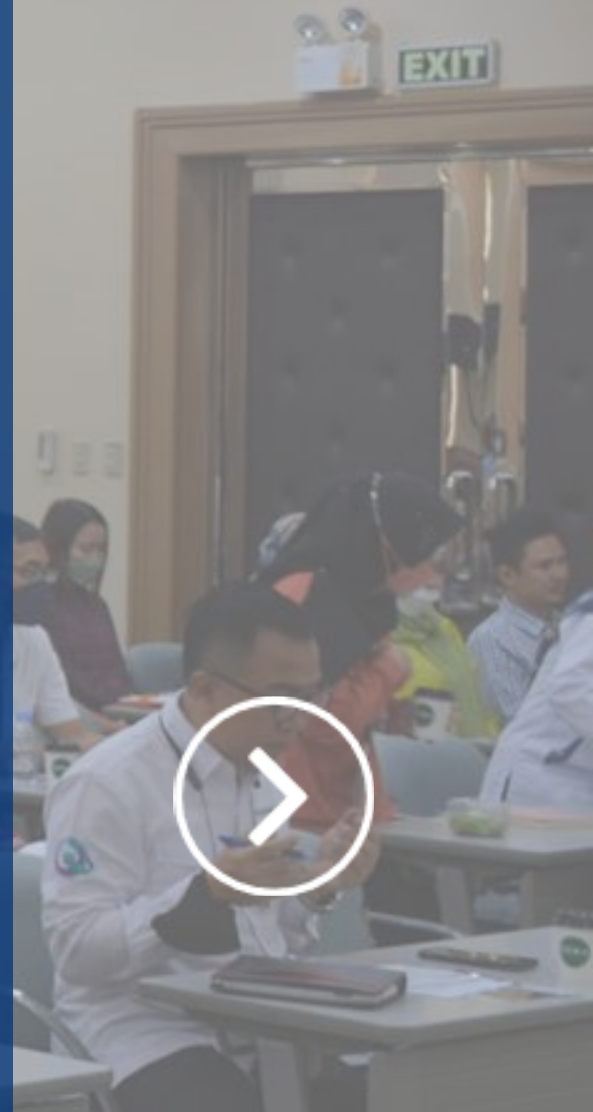
**Environmental Stewardship:** Lowering wastewater discharge and reliance on traditional water sources reduces ecological impact, aligning with sustainable practices and regulations.

**Water Security and Resilience:** Diversifying water sources increases long term water security, ensuring a reliable supply for the industrial town's growth and development.



# Challenge in GEIPP

- ❑ The need to pique our tenants' interest and active involvement in supporting GEIPP initiatives.
- ❑ Since our industrial park is not clustering system, it is hard to do the synergies.
- ❑ The application of regulations is very important and basic for Industrial Park management to implement EIP. In implementing regulations to support EIP in Indonesia, it is a challenge for industrial park management due to the lack of coordination and synchronization of policies between central and regional governments, and lack of understanding by the implementing agencies of the Industrial Park.
- ❑ Tailoring GEIPP's global principles to suit the specific economic, social, and environmental conditions of an industrial town can be a complex and demanding process. (Eg. Many NGO in Indonesia that asked & managed the waste from our Tenants.)





# Thank you



Office Address: MM2100 Office, Jl. Sumatera No. 1, Gandasari, Cikarang Barat, West Java, 17520

Phone : 021-898-1001

Website : [www.mm2100.co.id](http://www.mm2100.co.id)

Email : [mkt-sales@mmid.co.id](mailto:mkt-sales@mmid.co.id)

Instagram : @mmid2100

Linked in : MM2100 Industrial Town



SERTIFIKASI ISO  
9001  
2015



SERTIFIKASI ISO  
14001  
2015



SERTIFIKASI ISO  
45001  
2018



  
KAN SERTIFIKASI ISO  
17025  
2017