

LIFE Urban Adapt

The road towards a climate proof city

Johan Verlinde – City of Rotterdam, the Netherlands



UKRAINE GREEN RECOVERY CONFERENCE
КОНФЕРЕНЦІЯ «ЗЕЛЕНЕ ВІДНОВЛЕННЯ УКРАЇНИ»



Rain



River

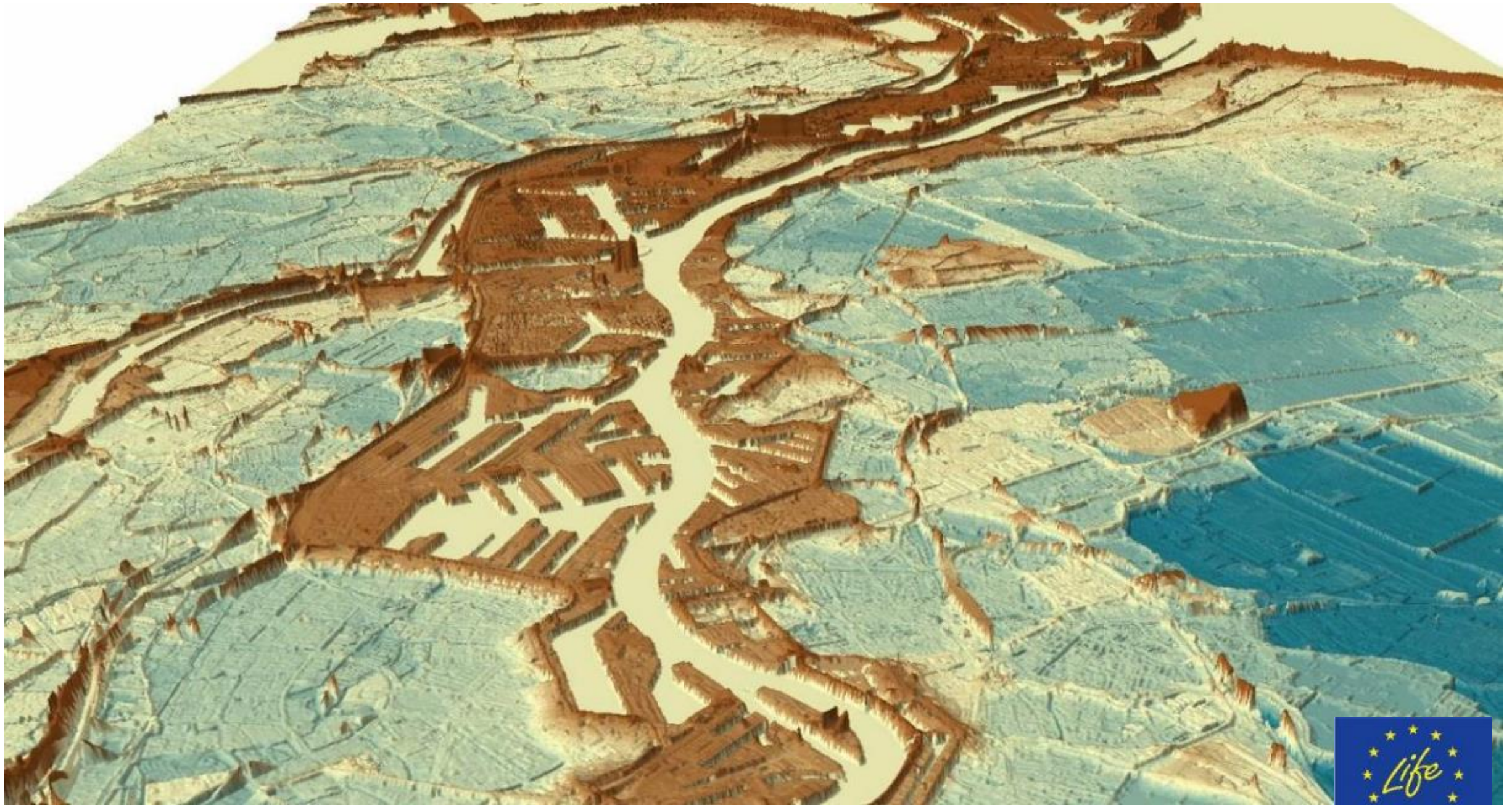


Sea



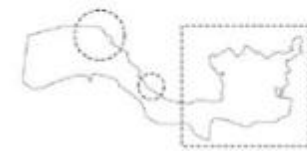
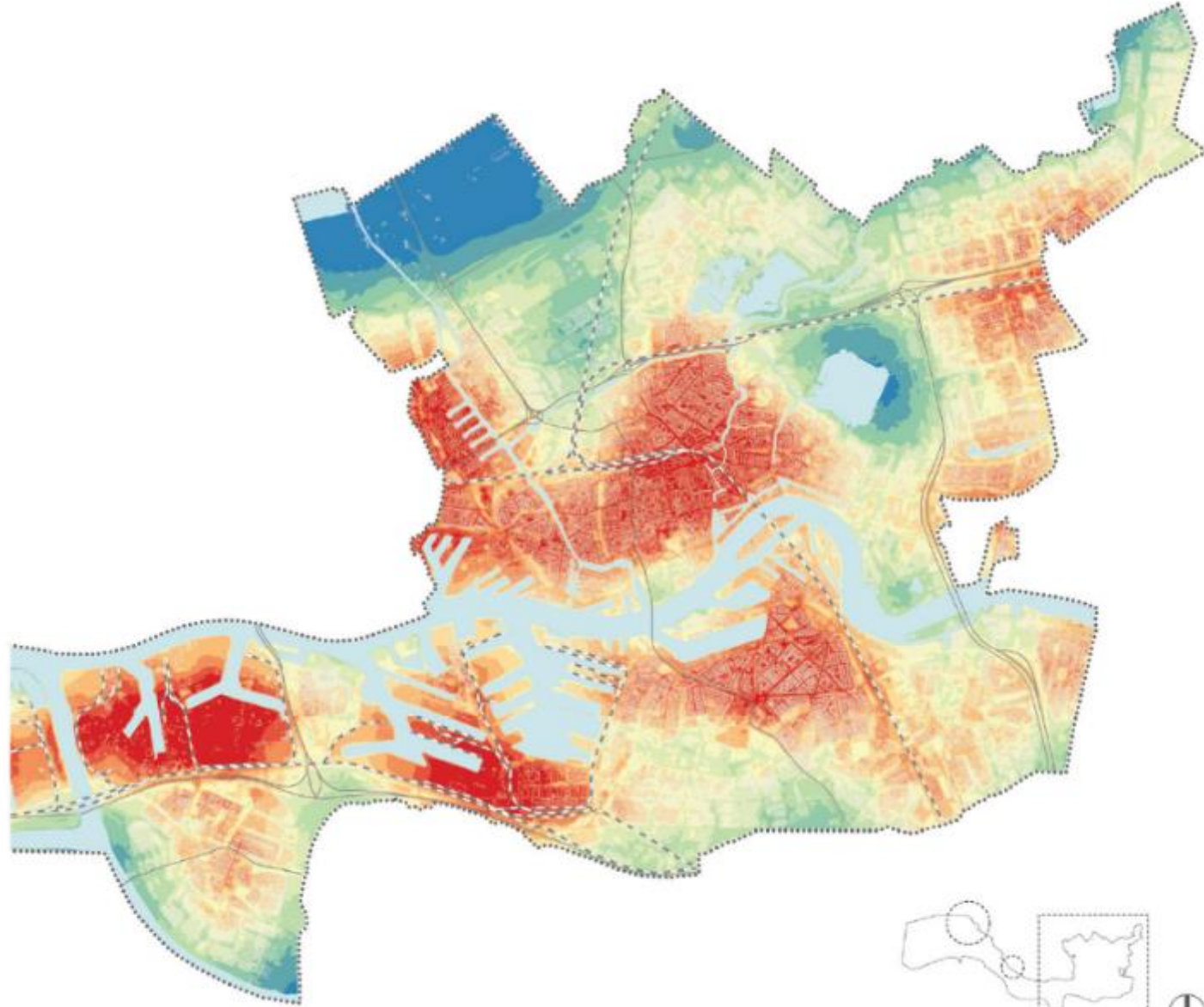
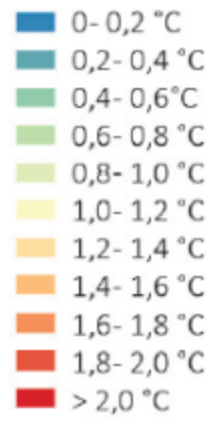
Groundwater





Adapting Rotterdam for flood
resilience

Urban Heat
Island Effect

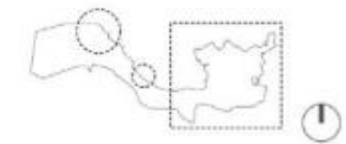
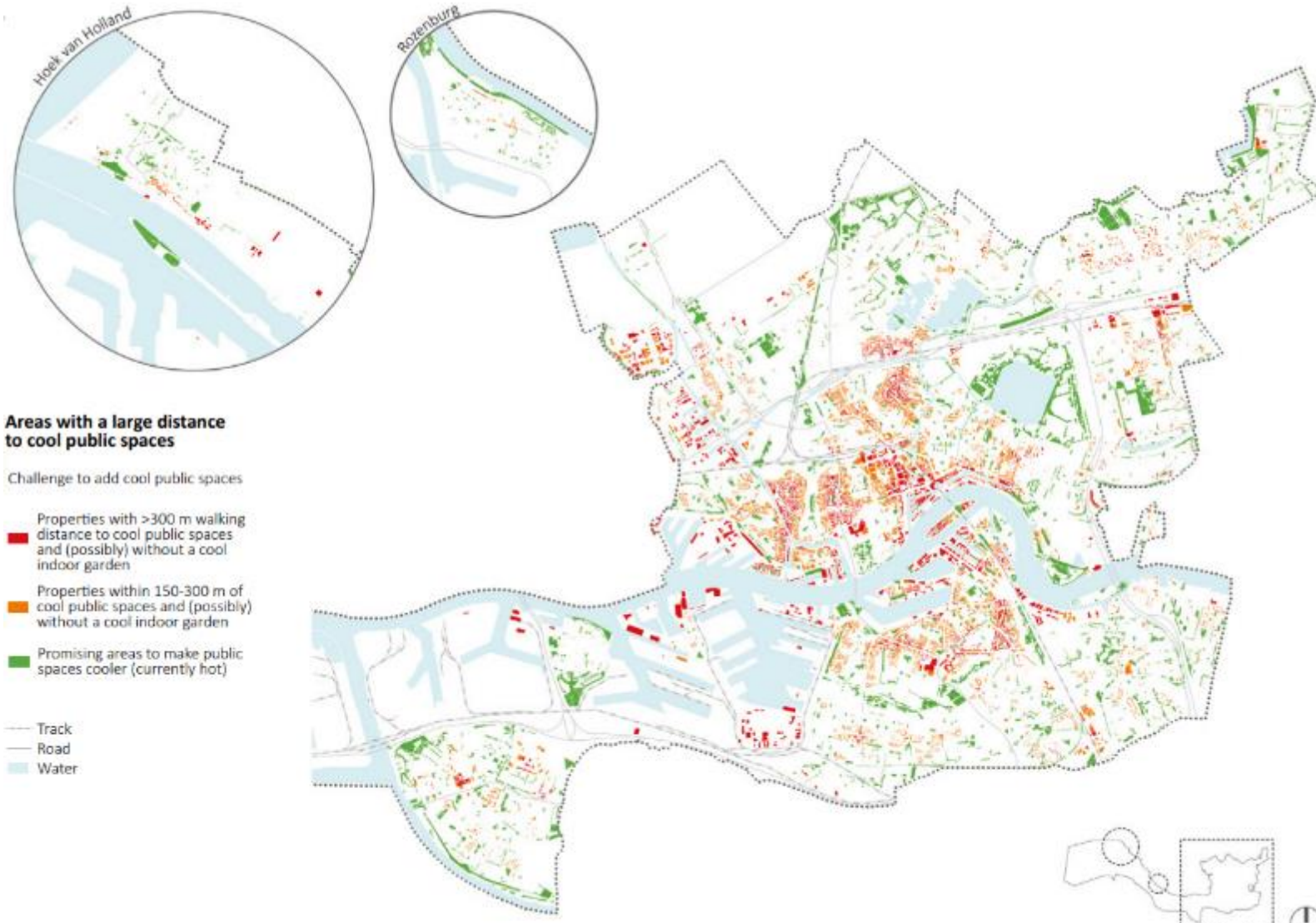


UKRAINE GREEN RECOVERY
КОНФЕРЕНЦІЯ «ЗЕЛЕНЕ
ПОВІДННЯ»



СЕ
НИ»

Adapting Rotterdam for flood resilience



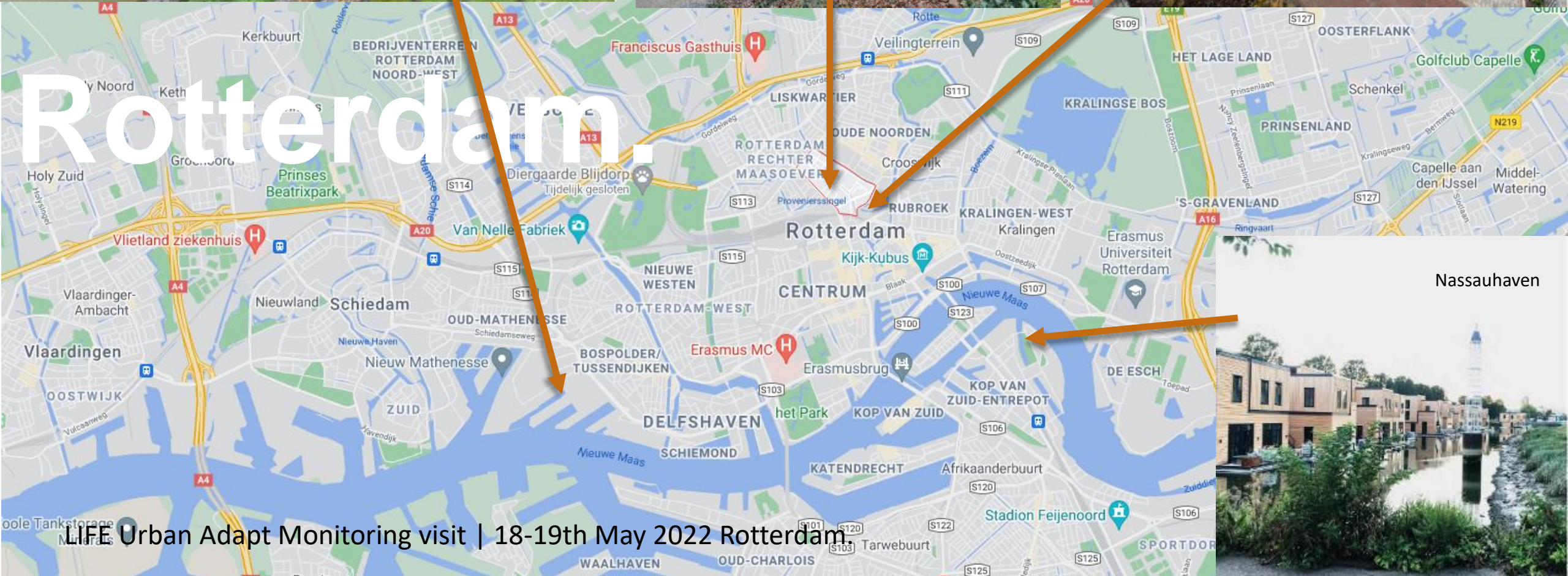
Keilehaven



ZoHo



Heliport



Rotterdam.

Nassauhaven



Adapting Rotterdam for flood

resilience



КОНФЕРЕНЦІЯ «ЗЕЛЕНЕ



СЕ
НИ»

Adapting Rotterdam for flood







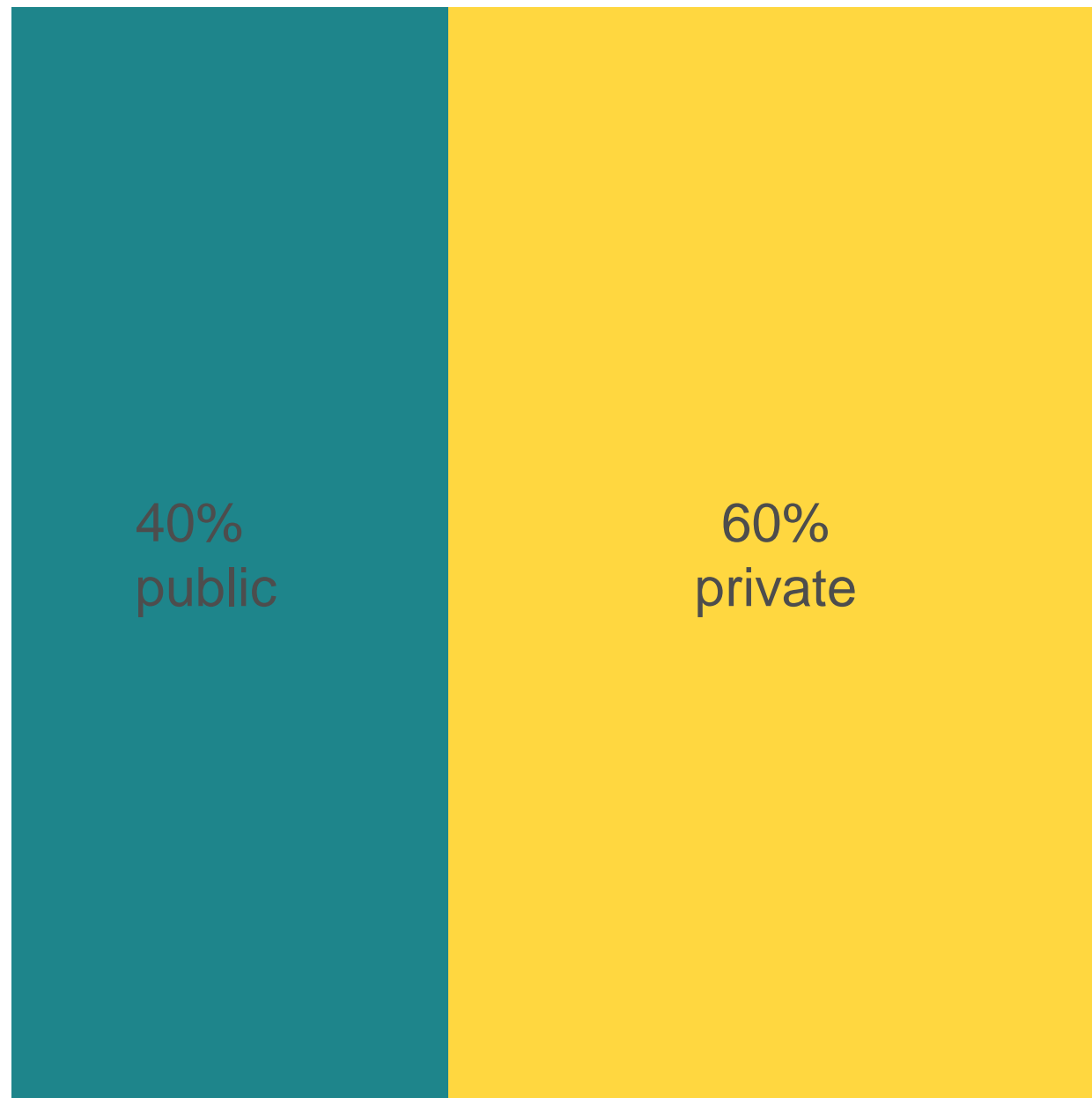
645 m² green
1230 m² pavement removed
1994 m² permeable surface
417 m³ water storage
232 m separate sewer
1345 m² rooftops disconnected



A photograph of a person walking on a wet, paved street. The person is wearing a light-colored jacket, blue jeans, and dark shoes. They are carrying a red plastic shopping bag with a repeating pattern of faces and a newspaper. The street is wet, and there are reflections of buildings and trees in the puddles. The scene is overlaid with several semi-transparent circles in shades of blue, orange, and red. The text "The next step" is written in white on a red circle.

The next step





Meaningful and sustainable projects can only emerge through collaborative co-creation with the citizens



Thank you

j.verlinde@rotterdam.nl



UKRAINE GREEN RECOVERY CONFERENCE
КОНФЕРЕНЦІЯ «ЗЕЛЕНЕ ВІДНОВЛЕННЯ УКРАЇНИ»