

LIFERADOMKLIMA-PL

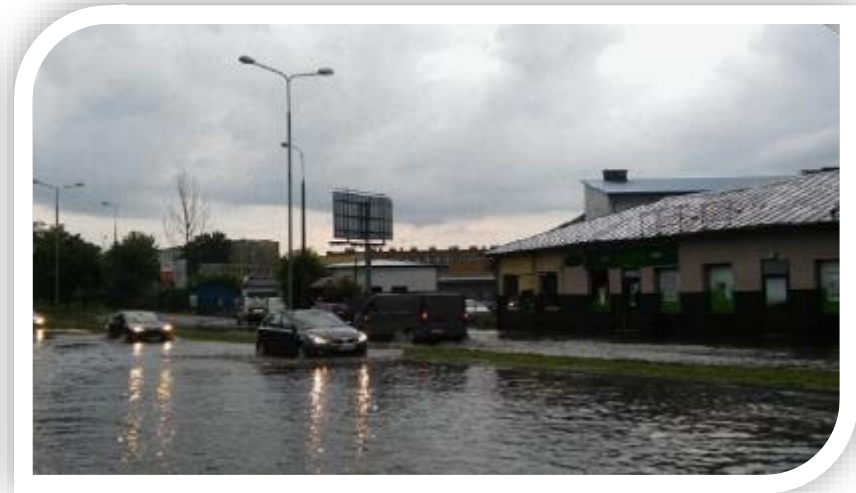
climate change adaptation through sustainable water management of the urban area in Radom City

Katarzyna Jankowska - Radom City Hall, Poland



UKRAINE GREEN RECOVERY CONFERENCE
КОНФЕРЕНЦІЯ «ЗЕЛЕНЕ ВІДНОВЛЕННЯ УКРАЇНИ»

Blue and Green Infrastructure (BGI) in LIFE RadomKlima project to tackle flash floods in urban area



About the achieved objectives of the project

Main watercourses:
the Mleczna River
and tributaries

Located 100 km
to the south of
Warsaw

197,000
inhabitants



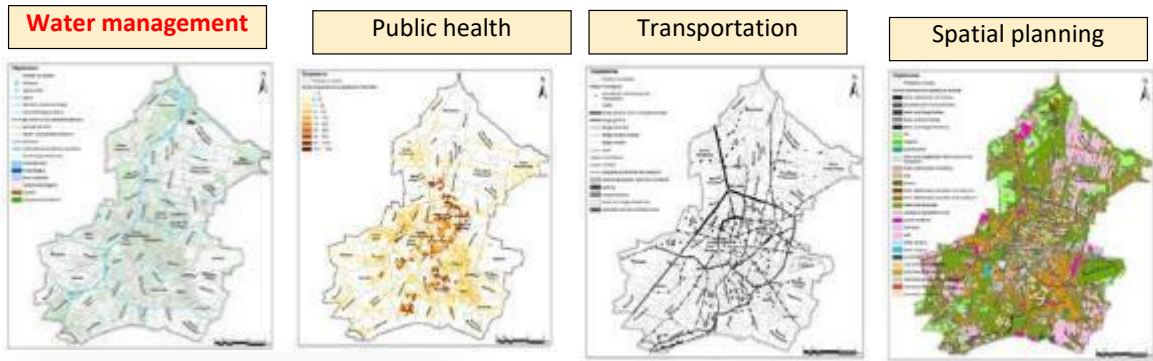
Overall objectives:

1. To increase climate resilience of Radom city by building demonstrative BGI for managing extreme rainwater flows and control flood risks on two levels:
outside waters (rivers and reservoir)
and
inner – city waters (rainfall waters)
2. To integrate and enhance biological diversity in all project actions

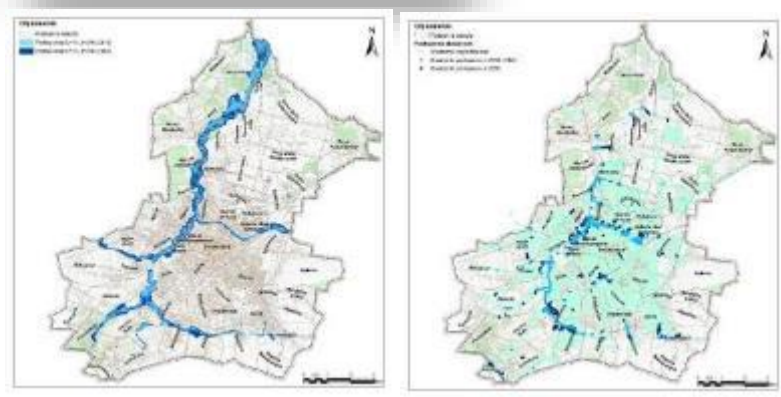


First things first: Vulnerability assessment BGI structures in the project

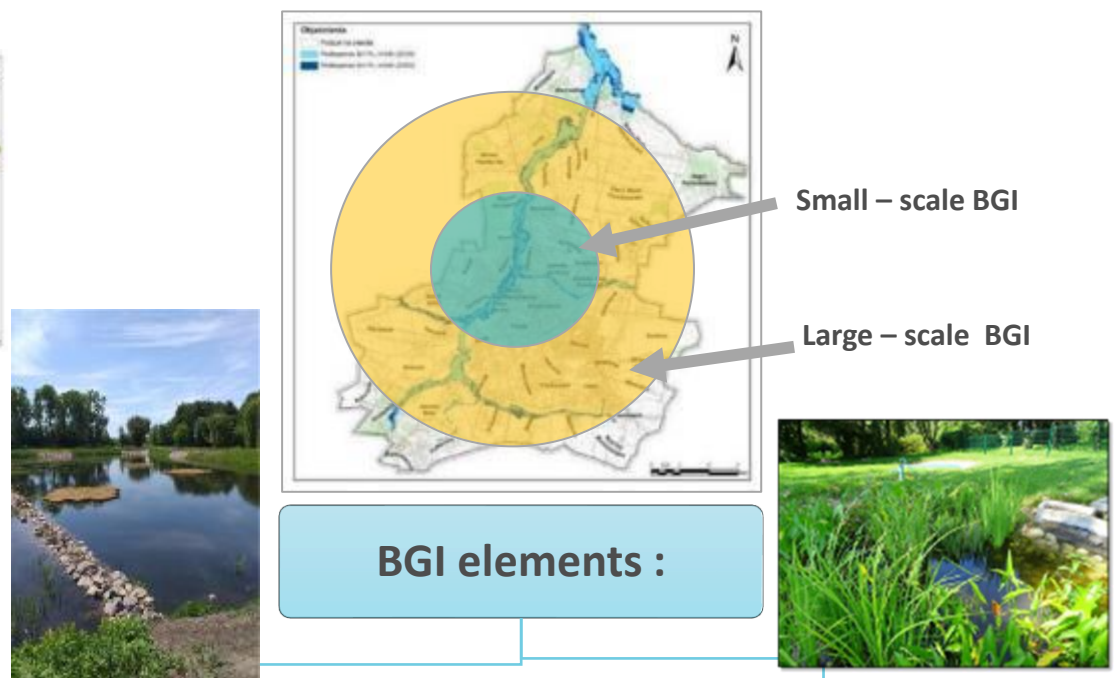
Sectors particularly vulnerable to anthropogenic climate change in Radom



GIS portal



Collective maps of floods caused by rivers and manholes in 2016 and 2050 / Vulnerability Assessment- www.mapy.life.radom.pl and at www.gis.umradom.pl/life_radom_mapy.html



5 large-scale BGI structures on 3 rivers and 1 city reservoir

34 small-scale BGI structures in the city landscape at 14 locations

Large-scale BGI

The Mleczna river restoration



Adaptation of land to create a polder flood plain of the Cerekwianka river



Adaptation of the Potok Północny to create a multifunctional area



Adaptation of the Borki reservoir and colmatation ponds



Adaptation of the Borki reservoir, colmatation ponds and channel A0



underground
rainwater channel
A0



Small-scale BGI: 5 climaponds, 8 climaboxes, 14 rain gardens and swales and 5 green bus stops and bicycle shelters - various forms of rainwater harvesting



Main problems encountered and lessons learnt from the project

Shortage of available space

Problems with administrative procedures

Lack of awareness and reluctance to support novels



Adaptation
– oriented urban planning with
land earmarked for BGI

Simplifying the procedures in favour of
the adaptation measures

Integration of different stakeholders to
the process – interdisciplinary
participatory approach to BGI



What we achieved to tackle flush floods in Radom?



Blue and Green Infrastructure is an effective and nature-friendly approach to flood risk management and resilient cities



Thank you

www.life.radom.pl

k.jankowska@umradom.pl



UKRAINE GREEN RECOVERY CONFERENCE
КОНФЕРЕНЦІЯ «ЗЕЛЕНЕ ВІДНОВЛЕННЯ УКРАЇНИ»