

LIFE UrbanStorm

Strategic approach and financial mechanism for storm water management system – experience of Viimsi Municipality

Tanel Mätlik - Viimsi Municipality, Estonia

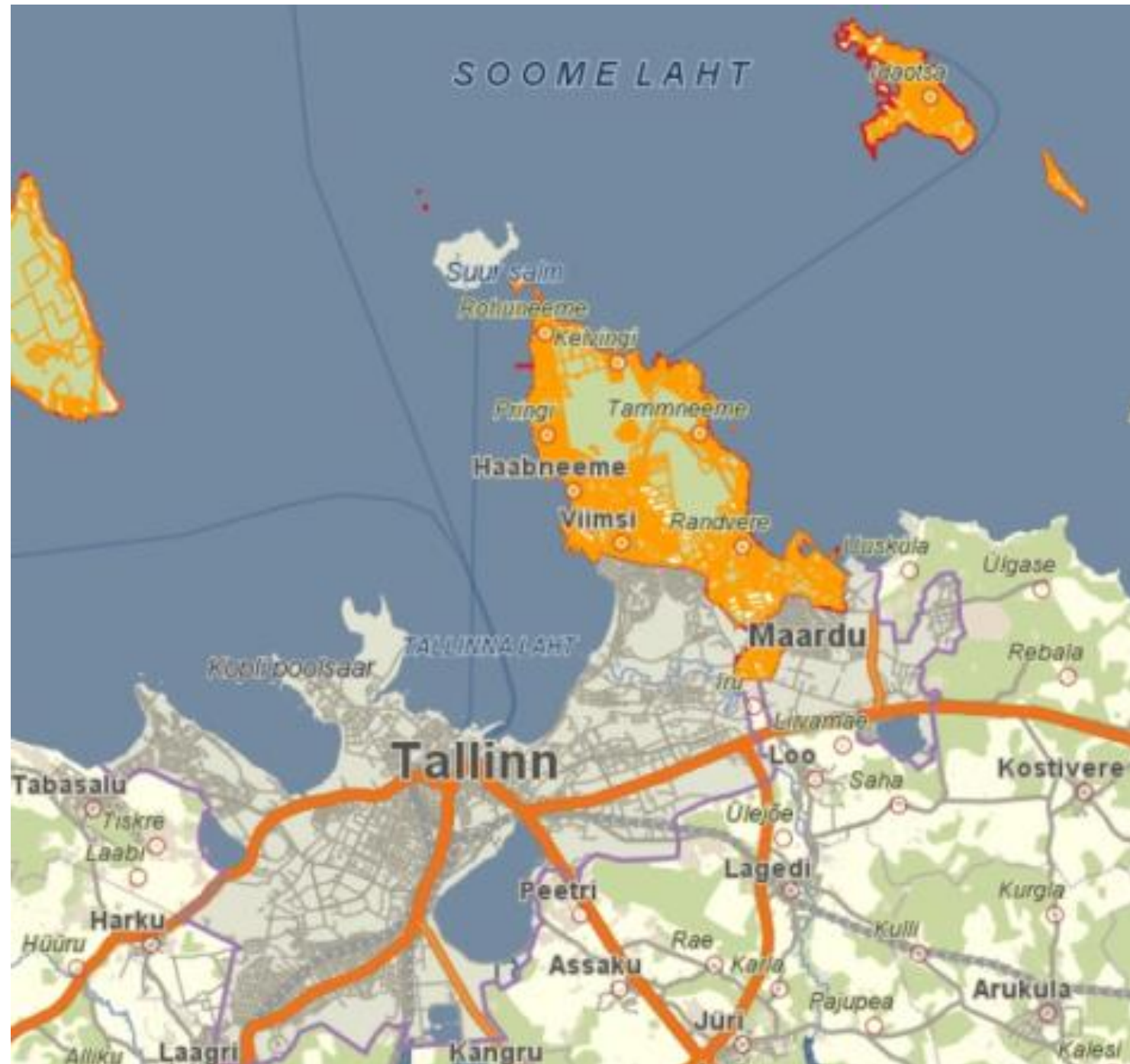


Main facts

- Located in Viimsi peninsula, next to capital city Tallinn, by the Baltic Sea
- Population: ca 22 000

Key climate challenges

- floods in urban areas caused by heavy rainfall
- floods in coastal areas due to storms
- heat islands



Legal framework

- [Viimsi Municipality storm water development plan 2016-2027](#)
 - maps problem areas
 - sets the objectives and measures/ technical solutions
 - provides investment plan
- [Regulation for the use of storm water systems in Viimsi Municipality](#)
 - requirements and conditions + procedure for providing and using the service
 - NB! when planning, preference should be given to nature-based storm water solutions!



Technical framework

- **Management** – team of specialists at Department of Civil Engineering
- **Infrastructure** – combining both “traditional” and nature-based solutions and materials
- **E-monitoring system** – smart infrastructure, information from weather stations, flowmeters, quality sensors, etc



Financial framework

- closely linked to [Strategy for Adaptation to Climate Change of Viimsi Municipality 2021-2031](#)
- finances from municipal budget and national & EU funds, incl.
 - [LIFE UrbanStorm](#)
 - [LIFE LATESTadapt](#)
 - [Interreg CB CleanStormWater](#)
 - [Interreg CB MUSTBE](#)

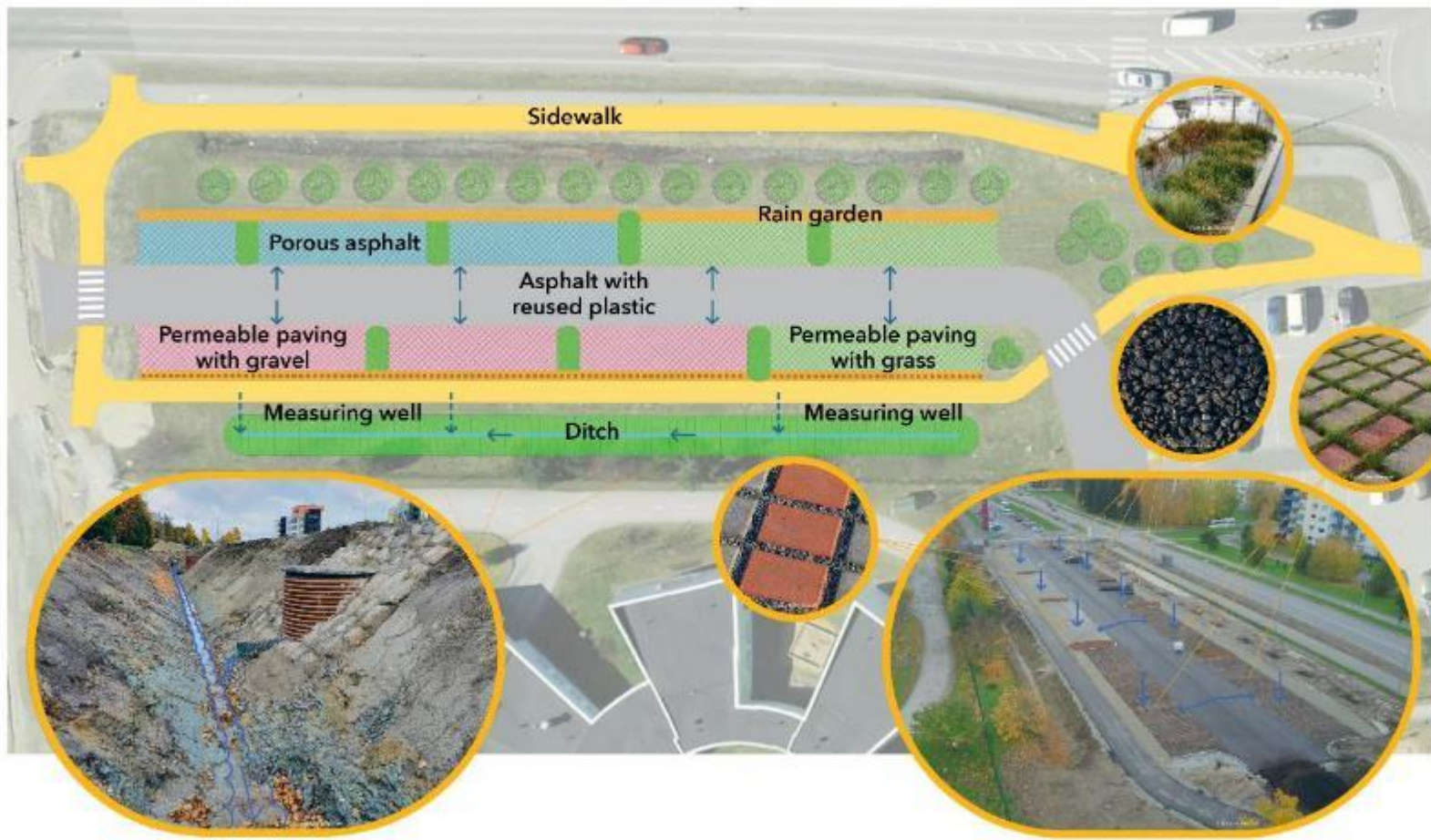


Constructed nature-based solutions

- Water-permeable coverings, grass coverings
- Ponds, reservoirs
- Delay ponds, delay ditches
- Rain beds, slopes
- Green roofs, flower meadows



Demo sites: Parking lot & Manor Park

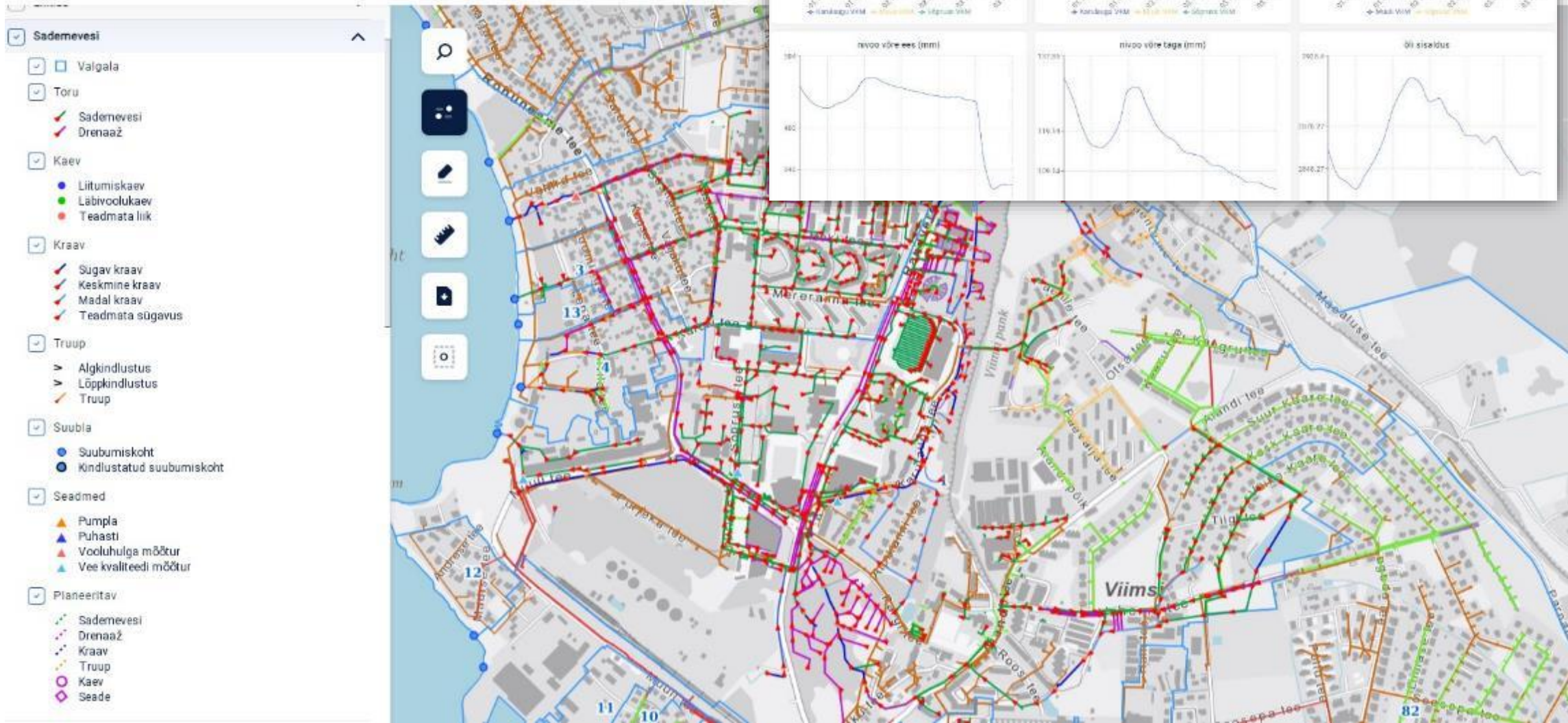


Porous asphalt vs standard asphalt



E-monitoring

UAAL Avaleht Taotlused Planeeringud Töökäsid Kaart Aruanded Register



What has changed in last 5 years in Viimsi

- **innovation** - in 2017 NBS relatively unknown; now 3 pilot sites constructed, more is coming
- **project teams** - projects have become a natural part of everyday work - the municipal government specialists themselves are the best experts!
- **snowball effect** - one successful project leads to the next because
 - *network* of cooperation partners expands
 - *learning by doing* - with each project you get smarter, esp. from the mistakes made 😊



When reconstructing municipal storm water infrastructure, look at solutions of the future such as NBS, not “the traditional” anymore



Thank you

tanel.matlik@viimsivv.ee



UKRAINE GREEN RECOVERY CONFERENCE
КОНФЕРЕНЦІЯ «ЗЕЛЕНЕ ВІДНОВЛЕННЯ УКРАЇНИ»